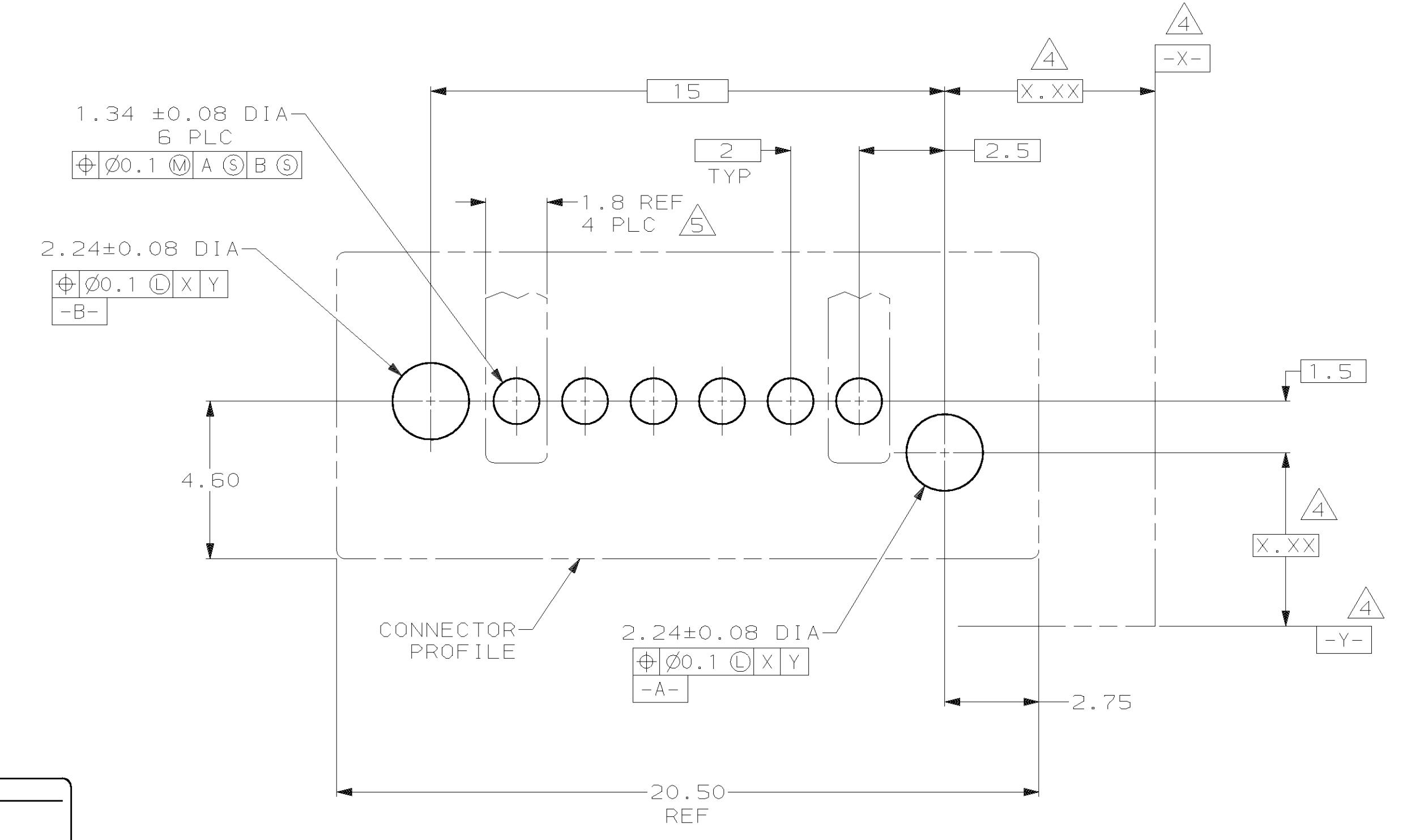
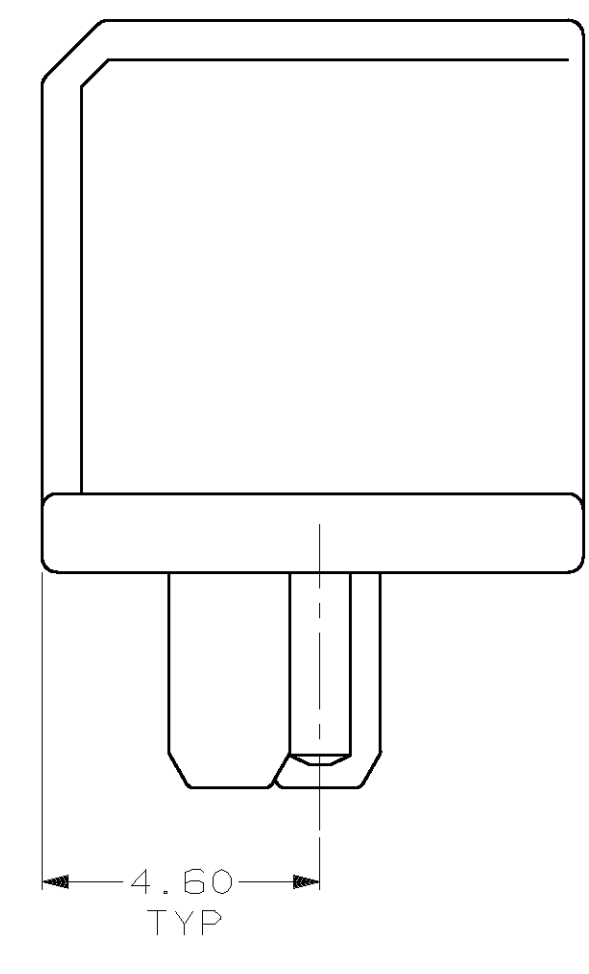
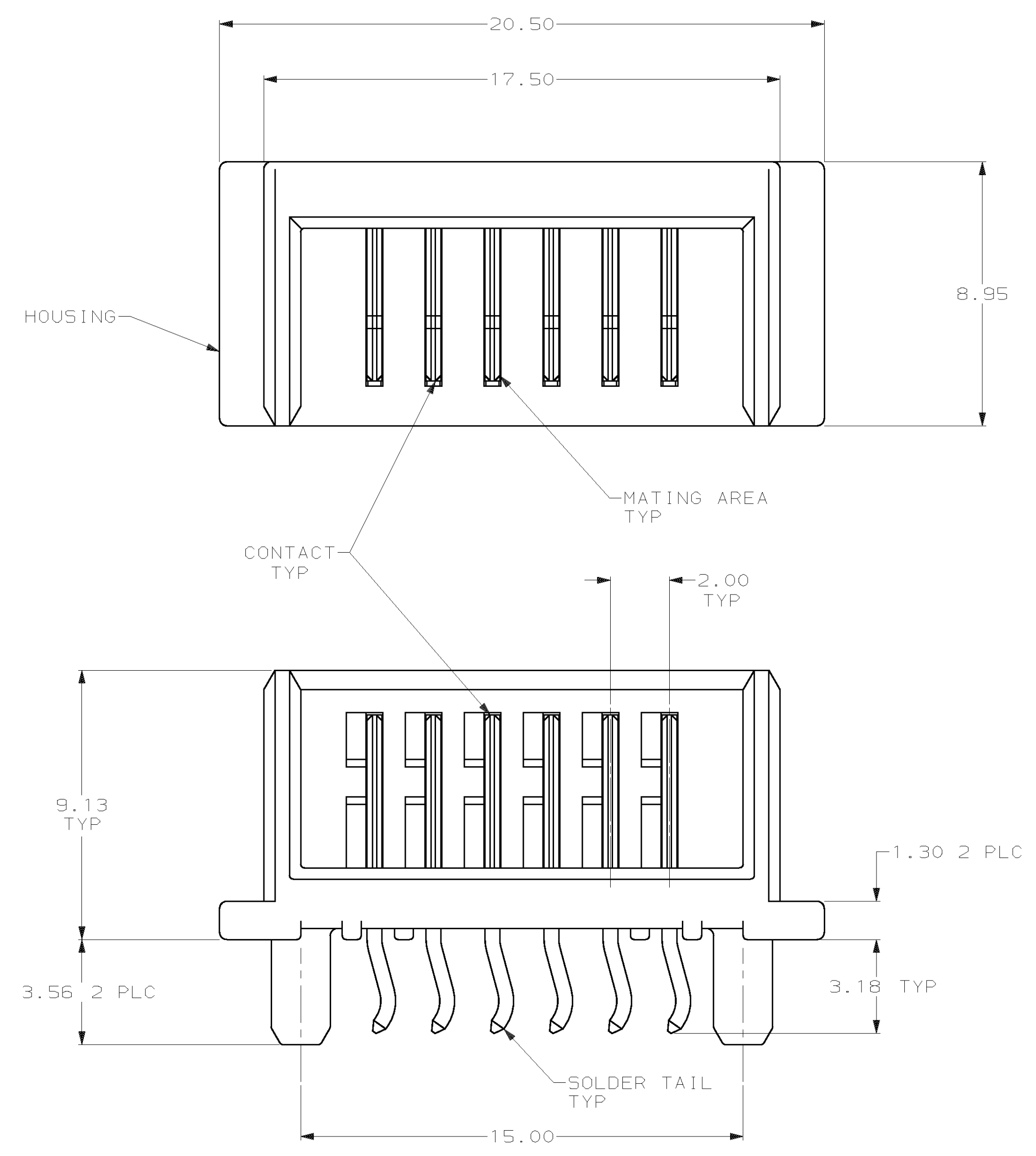


LOC	DIST	P	F	ZONE	LTR	DESCRIPTION	DATE	APPD
AD	0							
						D REV PER 0410-0189-96	14 MAR 97	CB
						E REV PER EC 0G1C-0036-99	29 MAR 99	KD
						F REV PER EC 0G1C-0056-99	30 MAR 99	KD



P.C. BOARD MOUNTING DIMENSIONS

- ① SPS, UL 94V-0 RATED, BLACK.
- ② BRASS.
- ③ .076μm MINIMUM GOLD OVER 0.76μm MINIMUM PALLADIUM NICKEL ON MATING AREA, 3.80μm MINIMUM TIN-LEAD ON SOLDER TAIL, ALL OVER 1.27 μm MINIMUM NICKEL.
- ④ DATUMS AND DIMENSIONS ESTABLISHED BY CUSTOMER.
- ⑤ RECOMMENDED MINIMUM TRACE WIDTH FOR END POSITIONS WHEN CARRYING 3 AMPS: 1.8 WIDE × 55μm THICK, BOTH SIDES.

THIS DRAWING IS A CONTROLLED DOCUMENT FOR AMP INCORPORATED. IT IS SUBJECT TO CHANGE AND THE CONTROLLING ENGINEERING ORGANIZATION SHOULD BE CONTACTED FOR THE LATEST REVISION.

DO NOT SCALE PRINT. UNLESS SPECIFIED DIMENSIONS IN MILLIMETERS		DR 06/09/94 M.E. SHIRK		787252-1 PART NO	
TOLERANCES - ON - 2 PLC DEC ± 0.13 3 PLC DEC ± - ANGLES ± -		CHK 06/09/94 WAYNE DAVIS		AMP AMP Incorporated Harrisburg, PA 17105-3508	
MATERIAL HOUSING = Ⓢ CONTACTS = Ⓢ		APPD 06/30/94 A. TRAVIS		NAME HEADER ASSEMBLY, 6 POSITION, MDI	
FINISH CONTACTS = Ⓢ		APPD 06/30/94 A. TRAVIS		PRODUCT SPEC -	
APPLICATION SPEC -		WEIGHT -		SIZE D	
				CAGE CODE 00779	
				DRAWING NO C=787252	
				SCALE 8:1	
				SHEET 1 OF 1	